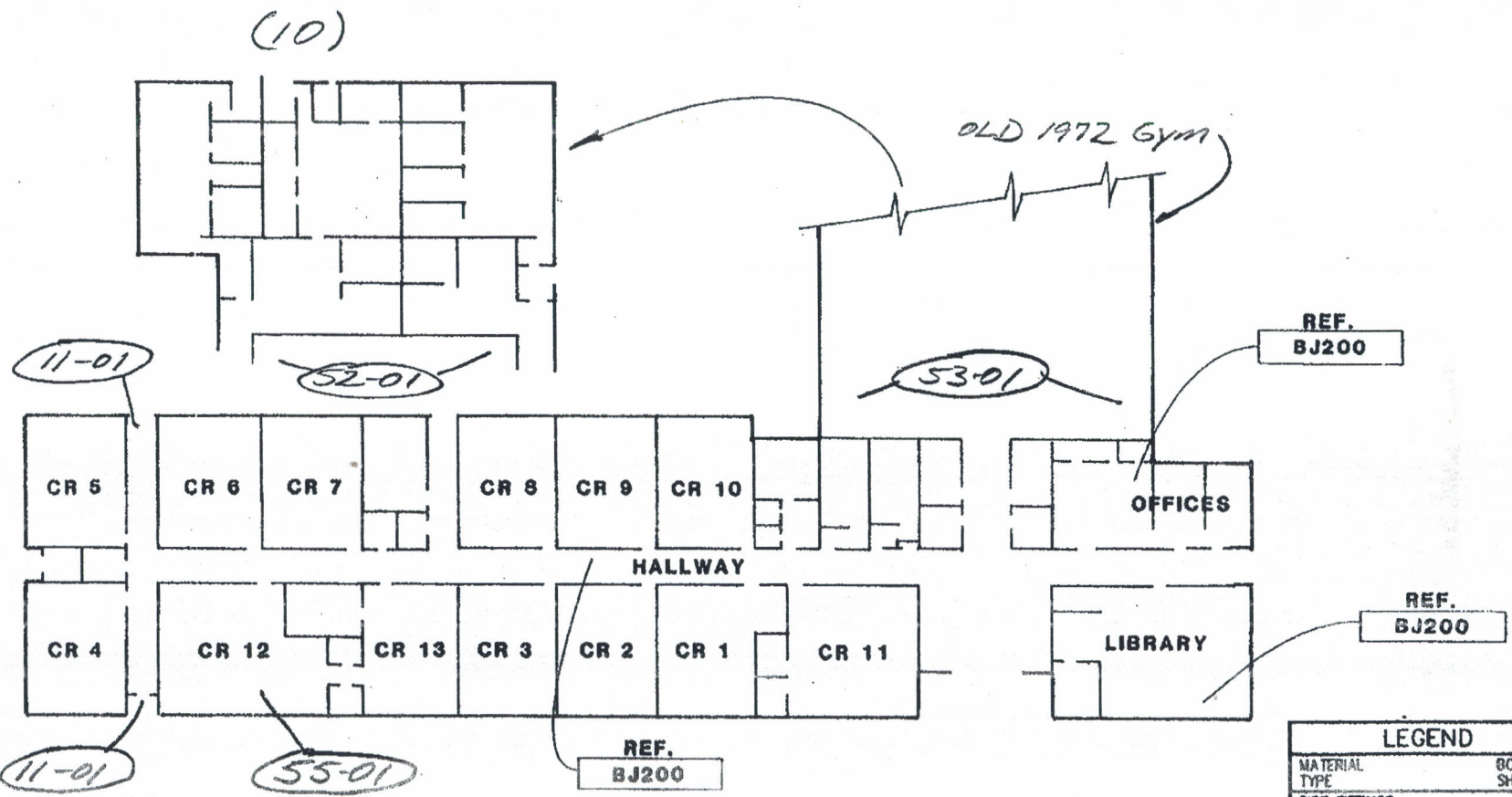


- 13 -



Beauvegard HS

REF. BJ200

REF. BJ200

REF. BJ200

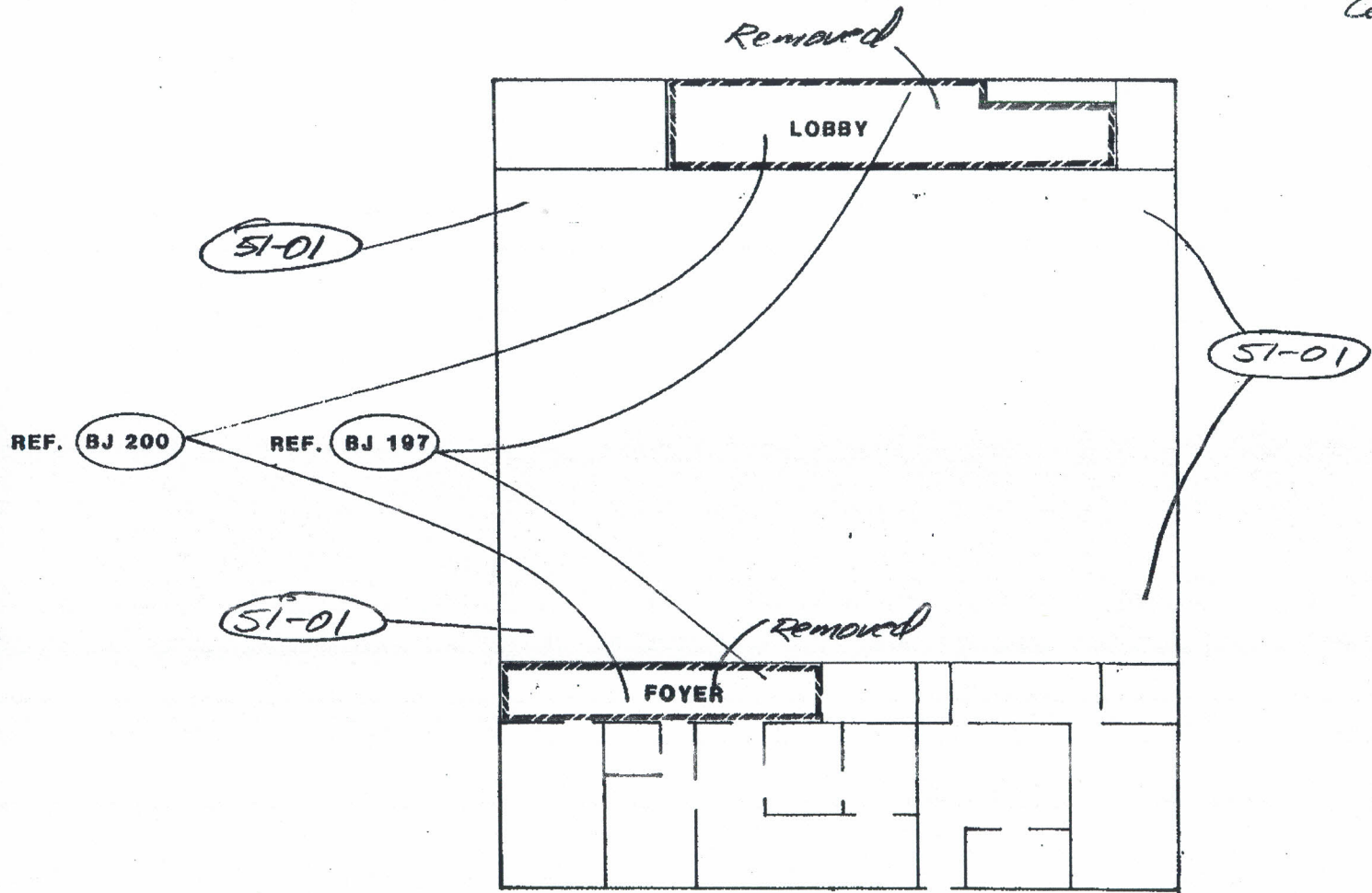
REF. BJ200

CR 1 - CR 13

LEGEND	
MATERIAL TYPE	BORDER/SHADING
PIPE FITTINGS
PIPES AND FITTINGS
AIR DUCT MATERIALS
FLOOR TILE
BOILERS/TANKS
SPRAY/TROWEL MATL
CONTAMINATED AREA
TRANSITE MATERIAL
OTHER
(XXXX)	DENOTES LOCATION OF SAMPLE WHICH TESTED POSITIVE FOR ASBESTOS.
(XXXX)	DENOTES LOCATION OF SAMPLE WHICH TESTED NEGATIVE FOR ASBESTOS.



51-01 4 "Modine" Gas Ceiling Heaters/Linings



Beauregard HS

LEGEND	
MATERIAL TYPE	BORDER/SHADING
PIPE FITTINGS
PIPES AND FITTINGS	-----
AIR DUCT MATERIALS	-----
FLOOR TILE	-----
BOILERS/TANKS	-----
SPRAY/TROWEL MAT'L	-----
CONTAMINATED AREA	-----
TRANSITE MATERIAL	-----
OTHER	-----
(XXXX)	DENOTES LOCATION OF SAMPLE WHICH TESTED POSITIVE FOR ASBESTOS.
(XXXX)	DENOTES LOCATION OF SAMPLE WHICH TESTED NEGATIVE FOR ASBESTOS.



FIGURE NO. 2.5 041-0010-03 GYMNASIUM

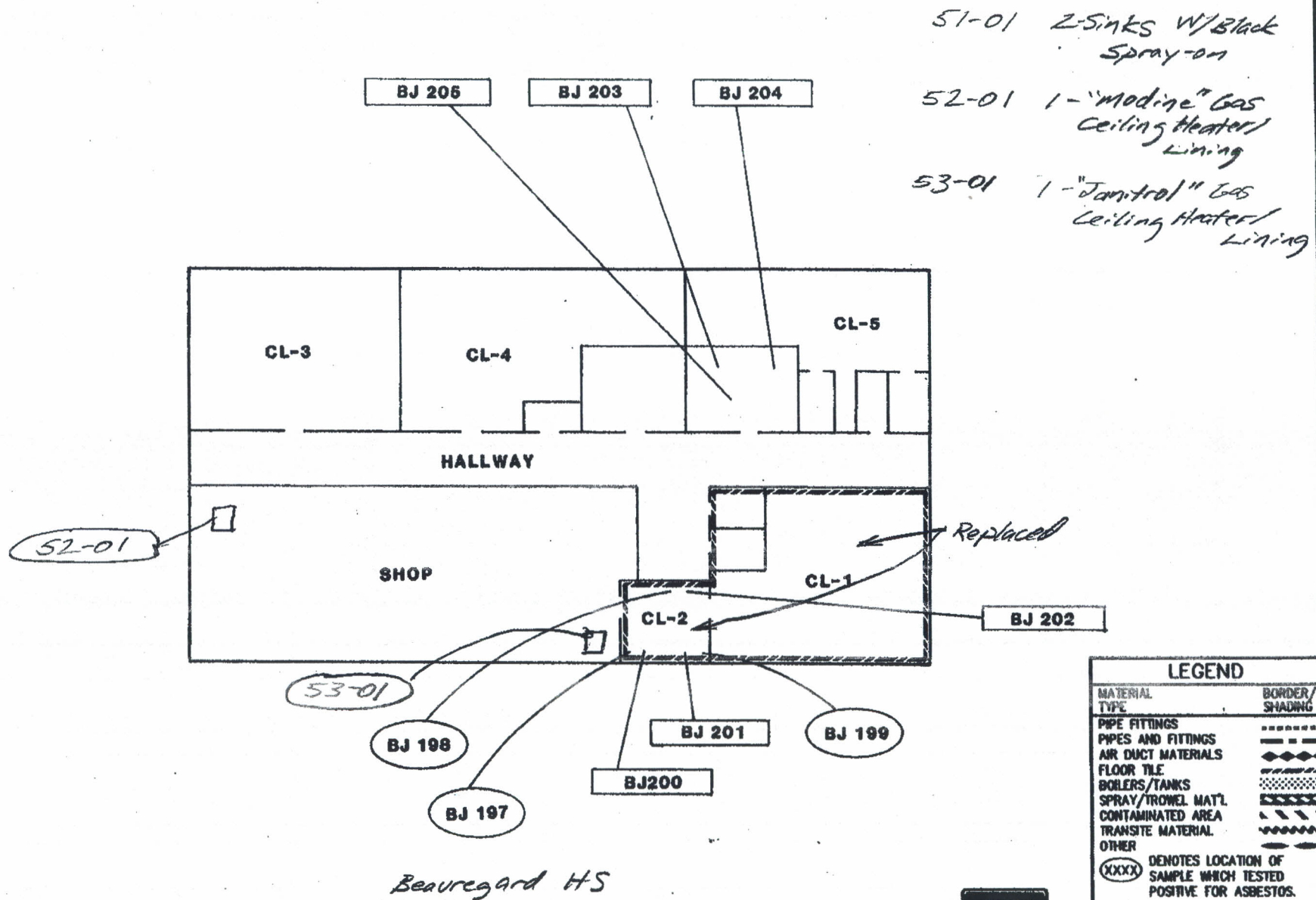


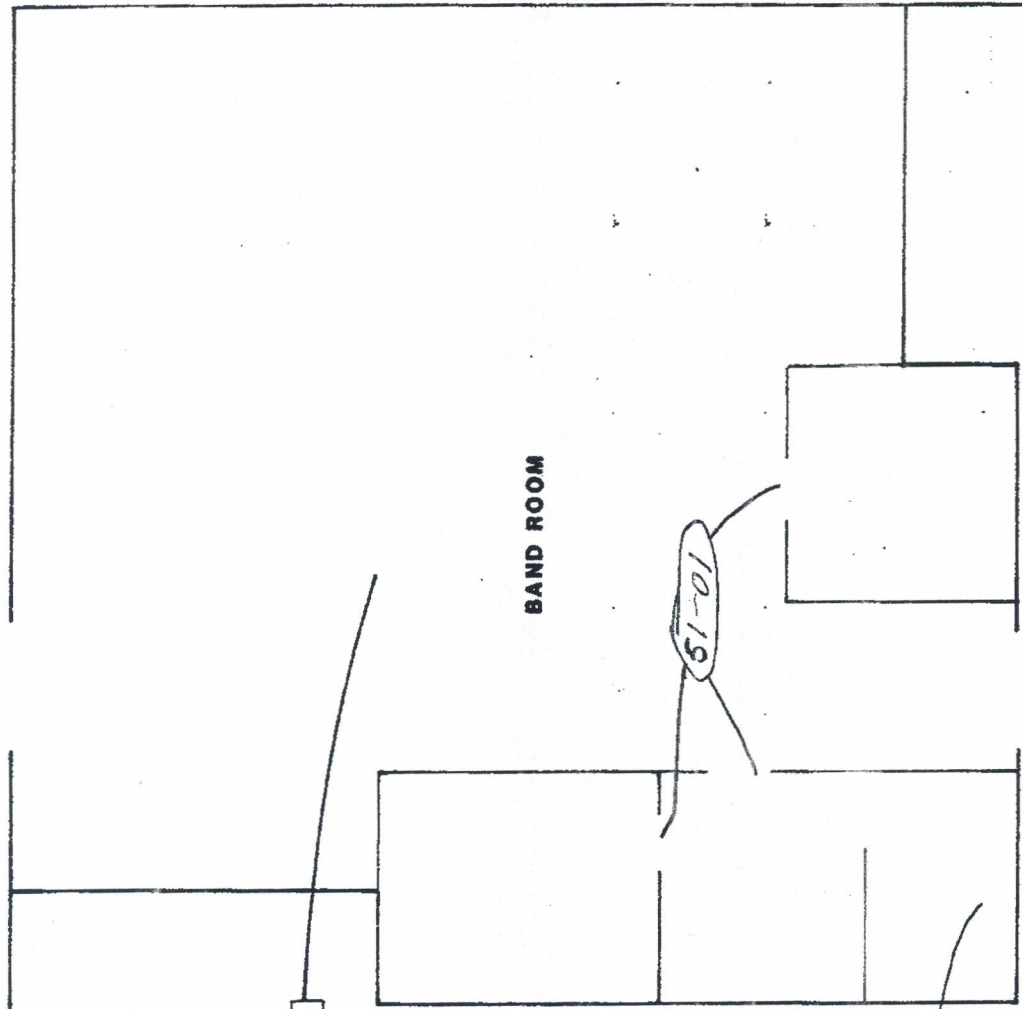
FIGURE NO.

2.6

041-0010-04 VOCATIONAL BUILDING



51-01 4-Fire-doors
 55-01 1-Sink w/Black
 Spray-on



Requires HS

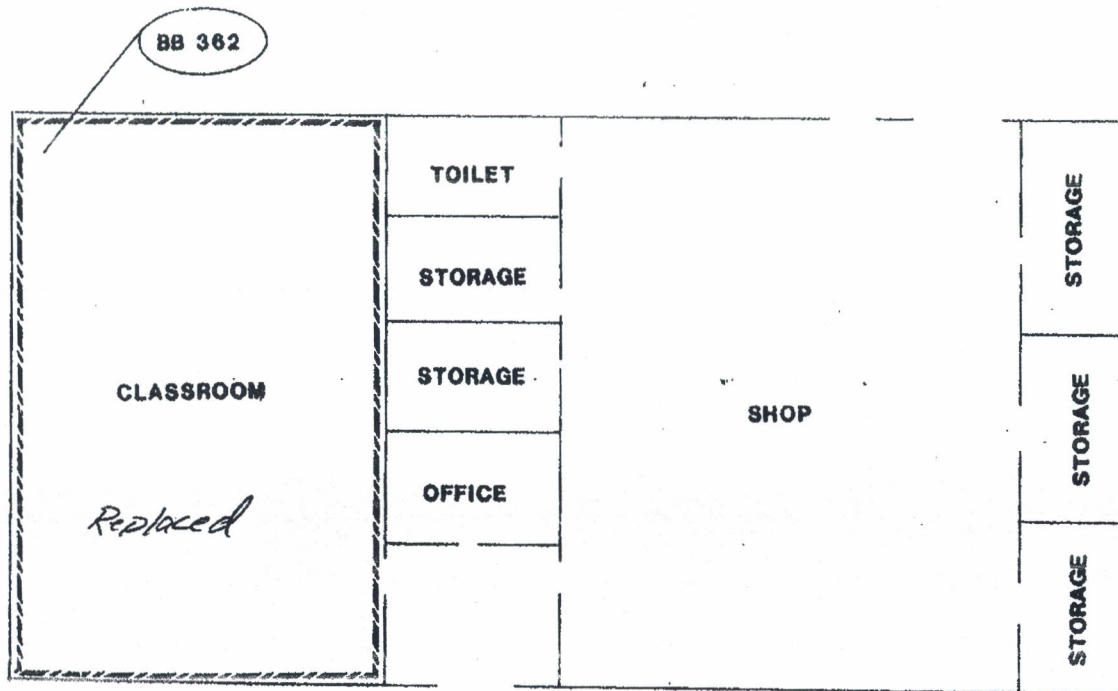
MATERIAL TYPE	BORDER/SHADING
PIPE FITTINGS
PIPES AND FITTINGS	-----
AIR DUCT MATERIALS	
FLOOR TILE	□□□□
BOILERS/TANKS	
SPRAY/TROWEL MATL.	
CONTAMINATED AREA	
TRANSITE MATERIAL	
OTHER	

LEGEND

XXXXX DENOTES LOCATION OF SAMPLE WHICH TESTED POSITIVE FOR ASBESTOS.
 XXXXX DENOTES LOCATION OF SAMPLE WHICH TESTED NEGATIVE FOR ASBESTOS.



FIGURE NO. 2.7 041-0010-05 BAND ROOM

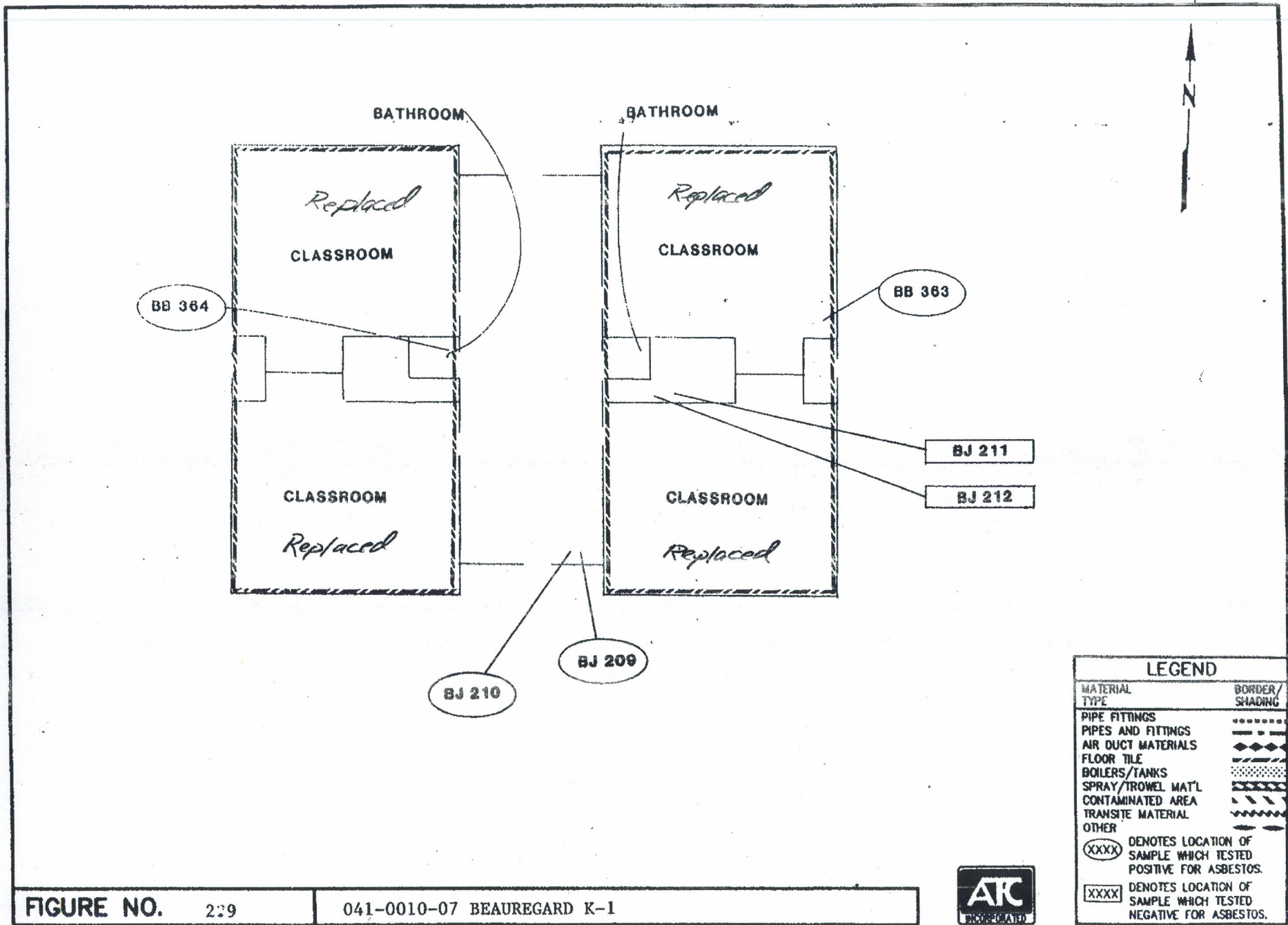


Beauregard HS

LEGEND	
MATERIAL TYPE	BORDER/SHADING
PIPE FITTINGS
PIPES AND FITTINGS	-----
AIR DUCT MATERIALS	-----
FLOOR TILE	-----
BOILERS/TANKS	-----
SPRAY/TROWEL MATL	-----
CONTAMINATED AREA	-----
TRANSITE MATERIAL	-----
OTHER	-----
(XXXX)	DENOTES LOCATION OF SAMPLE WHICH TESTED POSITIVE FOR ASBESTOS.
[XXXX]	DENOTES LOCATION OF SAMPLE WHICH TESTED NEGATIVE FOR ASBESTOS.



FIGURE NO. 2.8 041-0010-06 BEAUREGARD SHOP

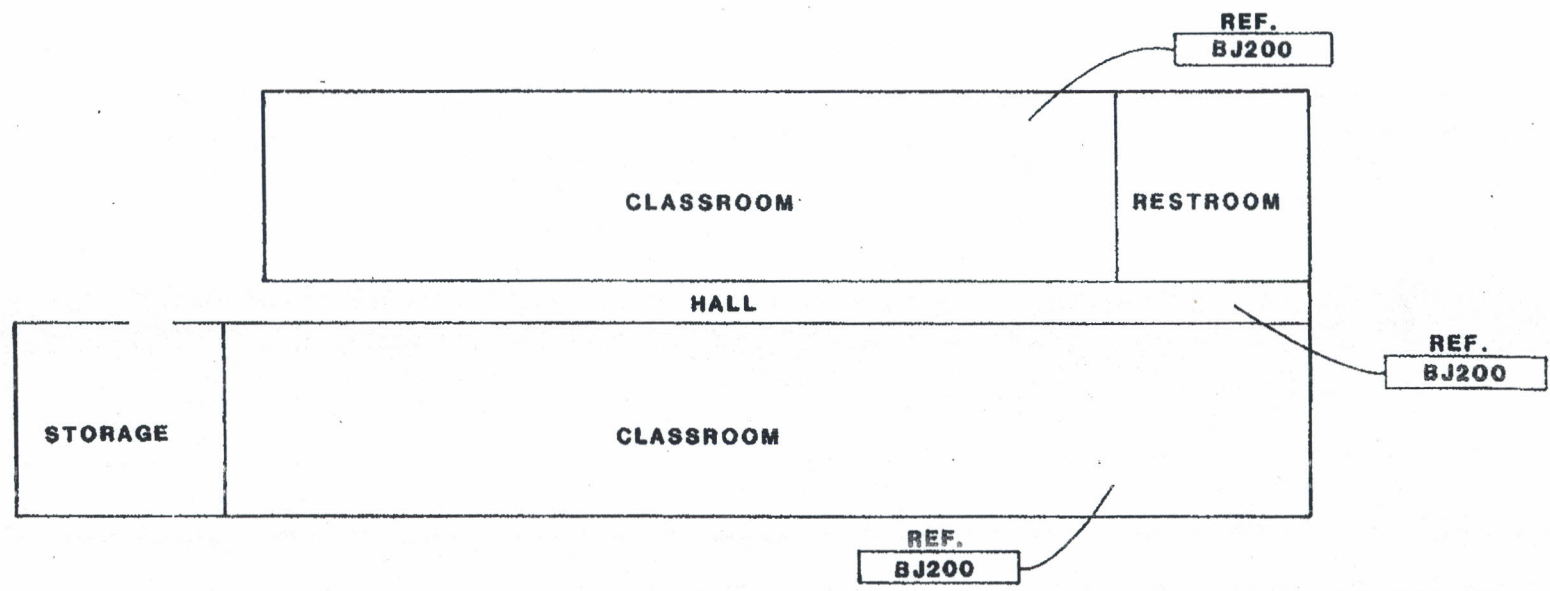


LEGEND	
MATERIAL TYPE	BORDER/SHADING
PIPE FITTINGS
PIPES AND FITTINGS	-----
AIR DUCT MATERIALS	-----
FLOOR TILE	-----
BOILERS/TANKS	-----
SPRAY/TROWEL MAT'L	-----
CONTAMINATED AREA	-----
TRANSITE MATERIAL	-----
OTHER	-----
(XXXX)	DENOTES LOCATION OF SAMPLE WHICH TESTED POSITIVE FOR ASBESTOS.
(XXXX)	DENOTES LOCATION OF SAMPLE WHICH TESTED NEGATIVE FOR ASBESTOS.



FIGURE NO. 209 041-0010-07 BEAUREGARD K-1

- 51-01 5-Fire doors (1981 Wing)
- 51-02 2-Fire doors (Hall)
- 52-01 4-Fire doors (1983 Wing)
- 55-01 4-Sinks w/white spray-on (1981 Wing)
- 56-01 4-Sinks w/mauve spray-on (1983 Wing)

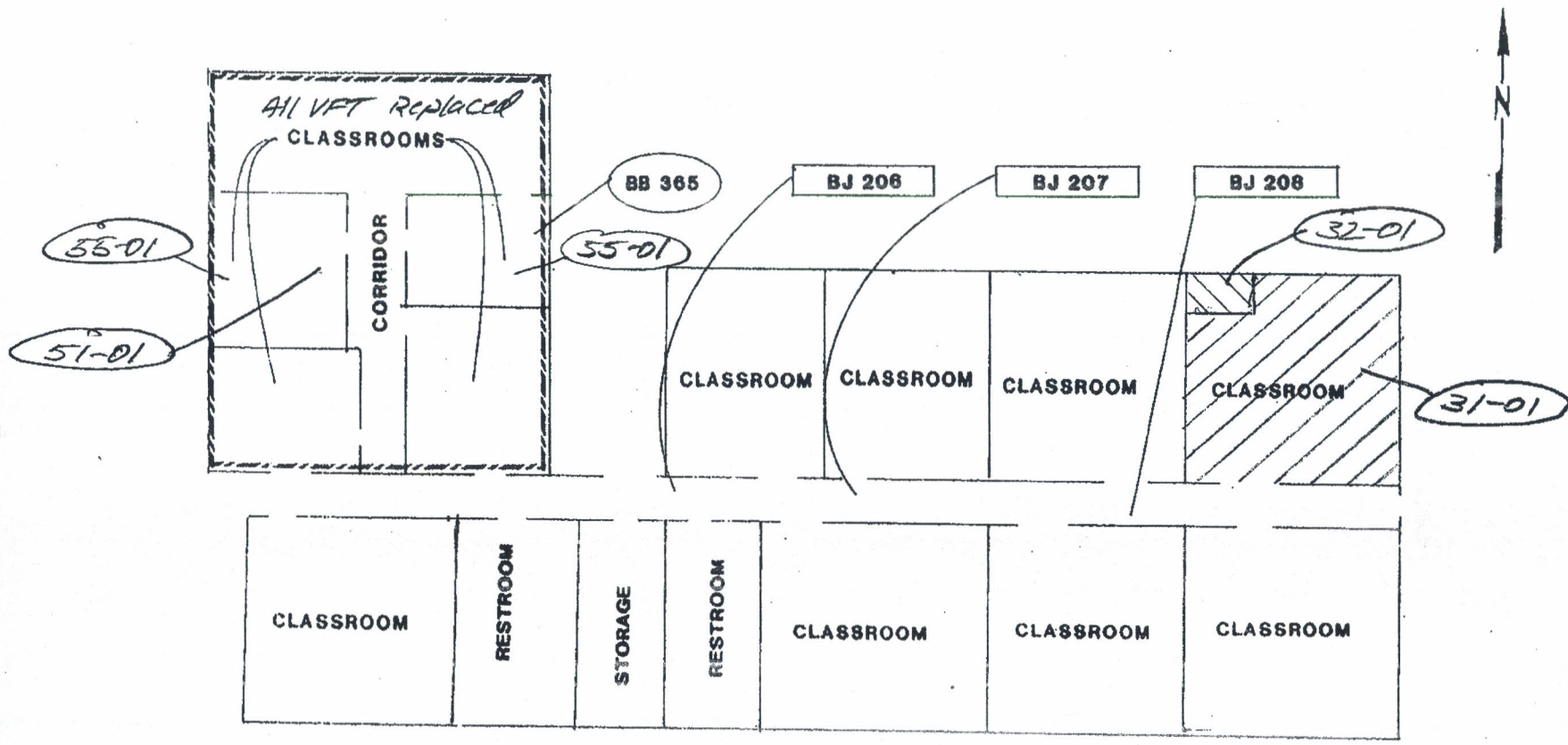


Beavergard

LEGEND	
MATERIAL TYPE	BORDER/SHADING
PIPE FITTINGS
PIPES AND FITTINGS
AIR DUCT MATERIALS
FLOOR TILE
BOILERS/TANKS
SPRAY/TROWEL MAT'L
CONTAMINATED AREA
TRANSITE MATERIAL
OTHER
(XXXX)	DENOTES LOCATION OF SAMPLE WHICH TESTED POSITIVE FOR ASBESTOS.
[XXXX]	DENOTES LOCATION OF SAMPLE WHICH TESTED NEGATIVE FOR ASBESTOS.



FIGURE NO. 2.11 041-0010-08 ELEMENTARY BLDG.



31-01 12" VFT - Beige w/ green streaks - 600 sf
 32-01 9" VFT (Restroom Area)
 51-01 1 - Fire-door
 55-01 2 - Sinks w/ Black Spray-on

Beauregard

LEGEND	
MATERIAL TYPE	BORDER/SHADING
PIPE FITTINGS
PIPES AND FITTINGS	-----
AIR DUCT MATERIALS	-----
FLOOR TILE	-----
BOILERS/TANKS	-----
SPRAY/TROWEL MAT'L	-----
CONTAMINATED AREA	-----
TRANSITE MATERIAL	-----
OTHER	-----
(XXXX)	DENOTES LOCATION OF SAMPLE WHICH TESTED POSITIVE FOR ASBESTOS.
XXXX	DENOTES LOCATION OF SAMPLE WHICH TESTED NEGATIVE FOR ASBESTOS.



FIGURE NO. 2.12 041-0010-09 MIDDLE GRADES BLDG.